



COMUNE DI
GIUGLIANO IN CAMPANIA

STUDIO DI FATTIBILITA' TECNICO ECONOMICO

Oggetto:

REALIZZAZIONE DI NUOVI LOCULI NEL NUOVO CIMITERO

Elaborato:

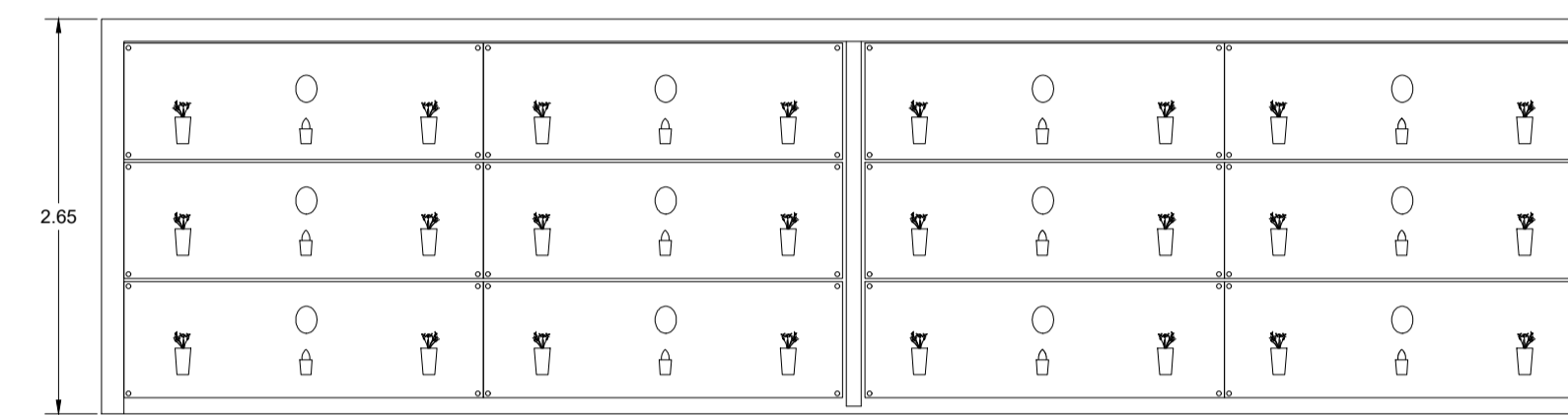
PROGETTO - TIPOLOGIA LOCULI - SCALA 1:50

ELABORATO - EG. ST. F. 05

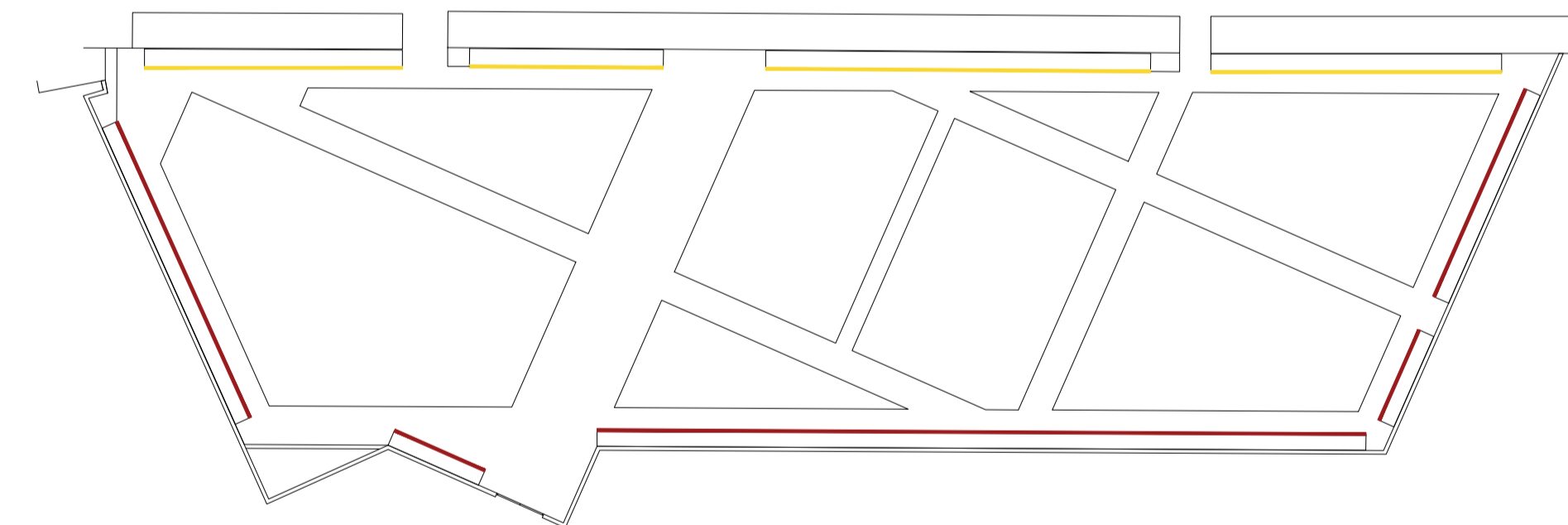
REV.	DESCRIZIONE	REDATTO	CONTROLLATO	APPROVATO	DATA
00					
01					

R.U.P.: **GEOM. GIULIANO VASSALLO** DIRIGENTE: **ING. GIUSEPPE SABINI**

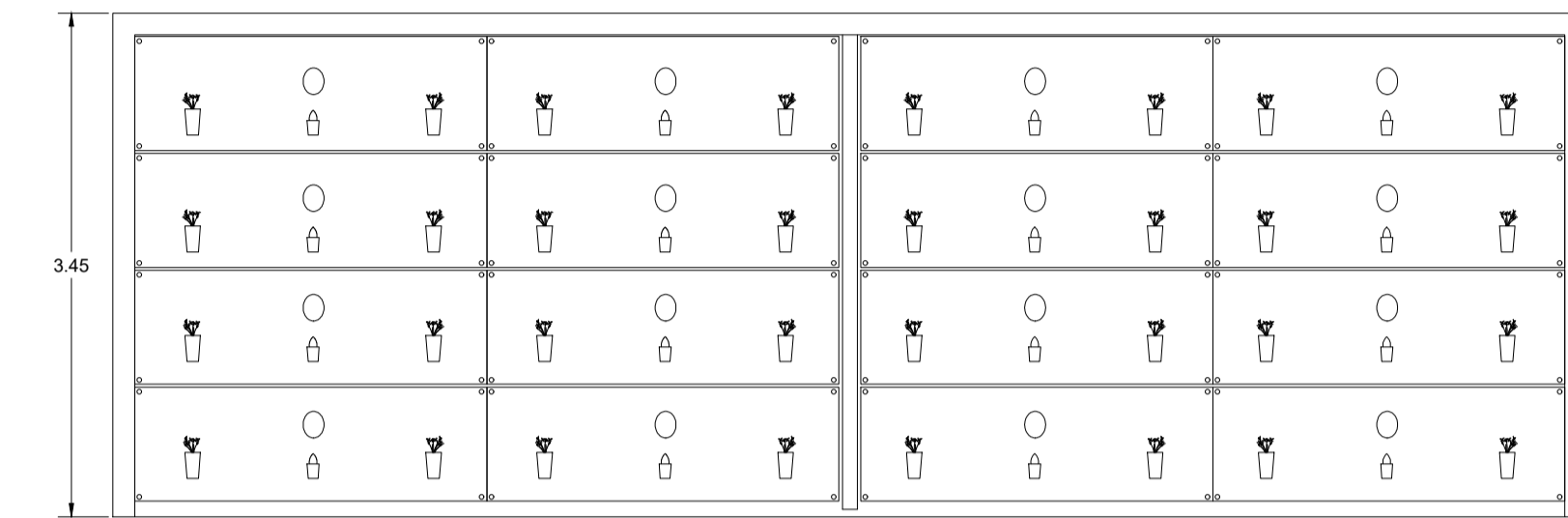
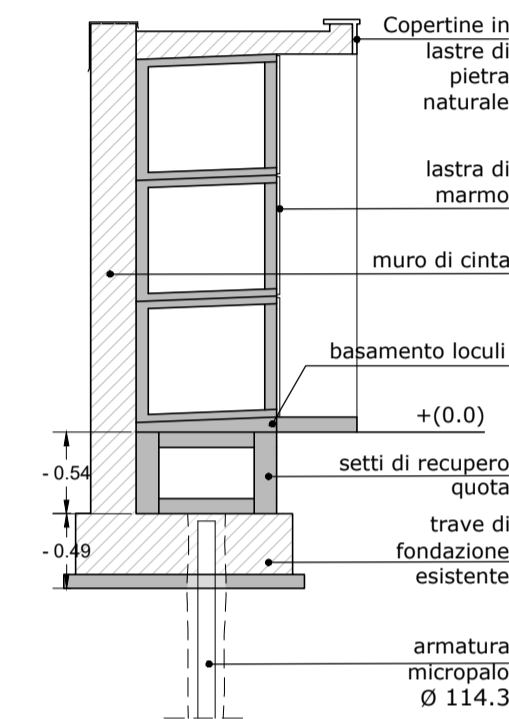
progettista: **ARCH. LUCIA GNERRE** consulenti: **Ing. PASQUALE CERASUOLO (progettazione strutturale)**



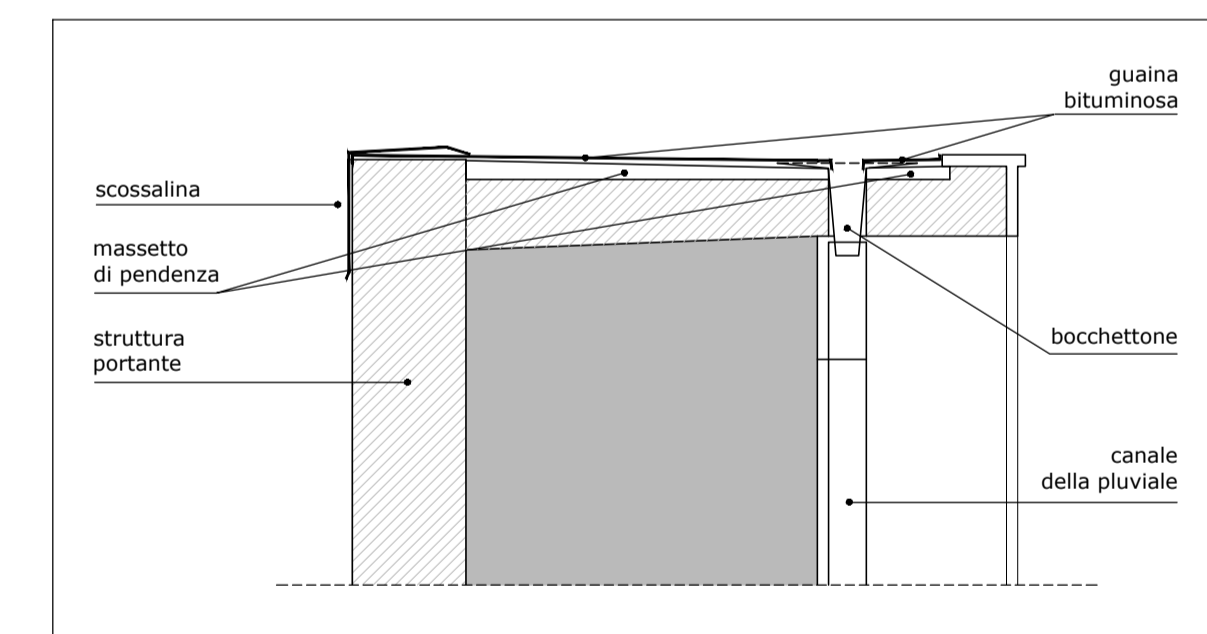
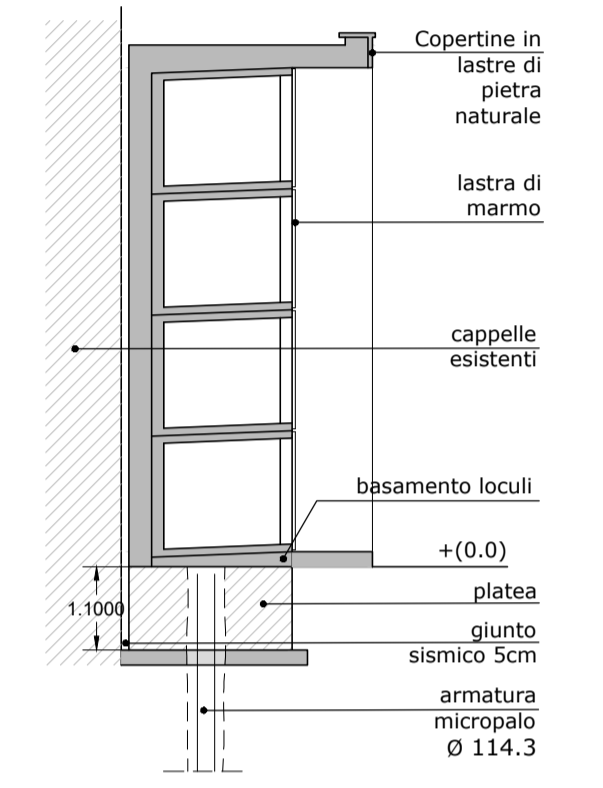
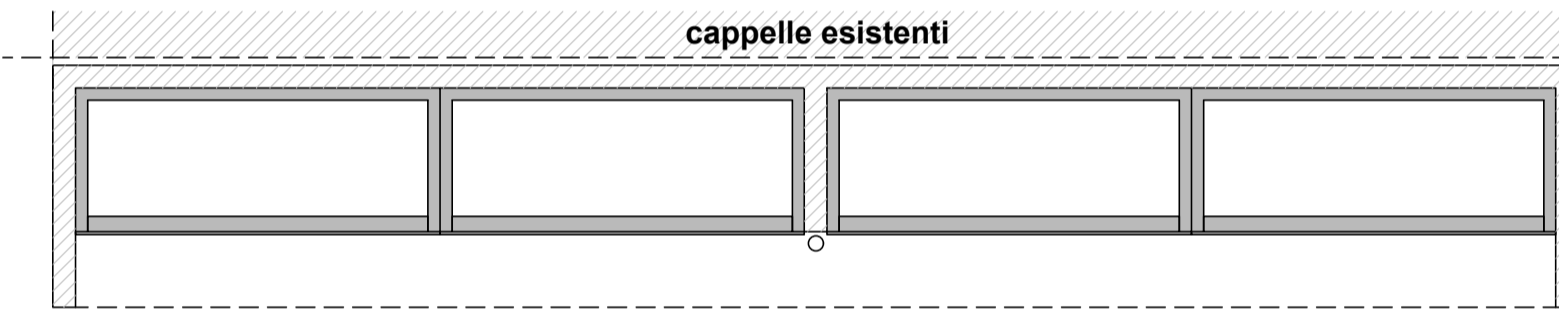
LOCULI A CANTERA TIPOLOGIA A



LOCULI A CANTERA TIP. A
LOCULI A CANTERA TIP. B



LOCULI A CANTERA TIPOLOGIA B



PARTICOLARE COSTRUTTIVO DELLA PLUVIALE 1:20